	<p style="text-align: center;">दि न्यू इण्डिया एश्यूरेंस कंपनी लिमिटेड THE NEW INDIA ASSURANCE CO. LTD. NORTH EASTERN REGIONAL OFFICE. G S ROAD. STARCITY COMPLEX, ABOVE RELIANCE TRENDS, 5TH FLOOR LACHIT NAGAR, GUWAHATI- 781007 (Govt of India Undertaking)</p>	Phone – 0361-2450639/ 2529016 bss53@newidia .co.in
---	--	--

Date : 06-03-2025

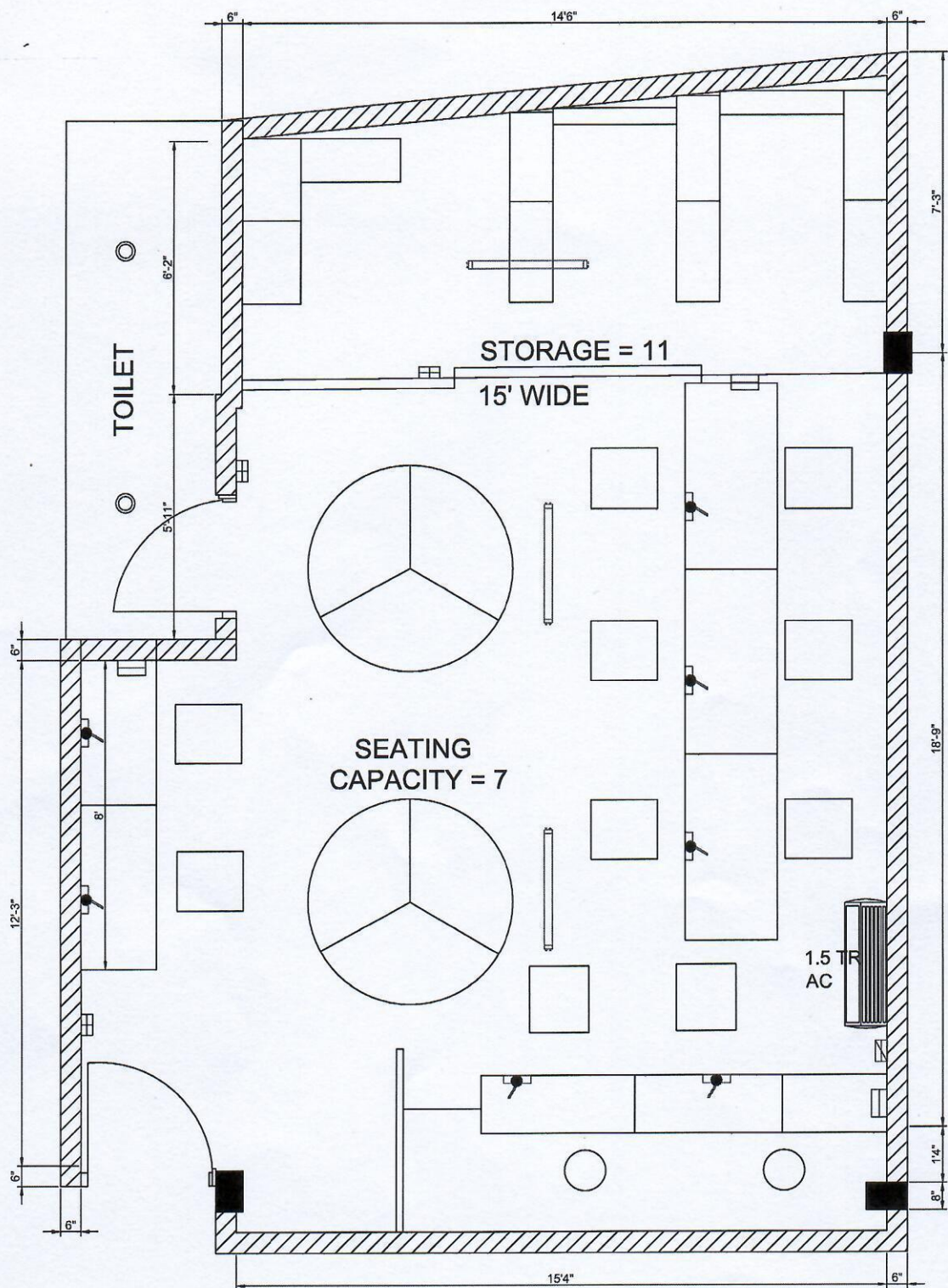
CORRIGENGUM -2 for Ref: NERO/ESTB/CONTRACTOR/2024/003, TENDER FOR "INTERIOR WORK OF DIBRUGARH BRANCH OFFICE AT DIBRUBARH , ASSAM".

The competent authority has decided to amend the following changes in the tender NERO/ESTB/CONTRACTOR/2024/003 dated 12/02/2025.

- The tender forms are available on our website www.newindia.co.in and www.tenderwizard.com/NIAEPROC and can be downloaded from both the sites.
- The tender is to be submitted in online mode only at www.tenderwizard.com/NIAEPROC no other mode of submission allowed.
- The tender is extended till 17-03-2025 till 12:30 pm and the technical bid will be opened on 17-03-2025 at 01:00 pm.
- The date mentioned in the 4th page of the tender as 17/12/2024 stands corrected as **12-02-2025**.
- On page no. 17 Memorandum row No.3 Time of completion is given as "45 days from the date of Issue of Work Order " stands corrected as **"30 days from the date of Issue of Work Order "**
- On page No. 17 memorandum row no. 4 Date of commencement of work is given as "within 7 days from the date of issue of work order stands corrected as **"within 5 days from the date of issue of work order "**
- The location of the office is The New India Assurance Co Ltd , Dibrugarh , Kadambarii complex, 1st floor, RNC path, Dibrugarh Chariali-786001.
- Additional documents containing BOQ format and drawing layout are uploaded .
- Minimum experience required is for 2 (years),this is valid for all points wherever applicable.
- After PERFORMA: BANK GUARANTEE FOR PERFORMANCE 2nd page after 10th point " ____day of ____ 2017 " is changed to ____ day of ____ 2025"
- All other terms and conditions remain unaltered .


Regional Manager



LEGEND:

Table Switch Board		Tube Light	
Wall Switch Board type-A		Fan	
Wall Switch Board type-B		Wall Fan	
Wall Switch Board type-C		Bulb	
AC Switch Board			

SYMBOL	TYPE	Nos	5A Socket	15 A Socket	Switch 5A	Switch 15A
	Table Switch Board	7	28		7	
	Wall Power Switch Board	3		6		6
	Wall AC Switch Board	2		1		1
	Wall Light Switch Board	3	2		9	

SN	DATE	DESCRIPTION	DRN	CHKD	APRVD
4					
3					
2					
1					
REVISION					

PROJECT

CONSULTANT

JALAN & ASSOCIATES
 50 FLOOR-506, SHIRAZHALLI, KELVIN CINEMA COMPOUND, SRCB ROAD
 TUMKUR, COIMBATORE-571001
 Ph: 94484 58602 Email: idr@jalans.com www.jalans.com

CLIENT

APPROVED FOR ISSUE BY

AUTHORISED SIGNATORY

TITLE

SCALE	N.T.S.	DATE	DRAWING NO.	REV. NO.
DESIGNED	BARASA	24.12.2024	JAA-Pum & Elec. Desg-02	
DRAWN	BARASA			
CHECKED	AMLAN		DRAWING STATUS	
APPROVED	AKL, PKUSH JALAN		FOR APPROVAL	

R0

The New India Insurance Co. Ltd



Tender No : - NERO/ESTB/CONTRACTOR/2024/003

Name of the work : INTERIOR WORK OF DIBRUGARH BRANCH OFFICE AT DIBRUGARH, ASSAM

Name Of The Bidder			
SL.NO.	DESCRIPTION OF ITEMS	TOTAL AMOUNT (Exclusive of GST)	TOTAL AMOUNT In Rs. (Exclusive of GST) in words
1.0	BILL OF QUANTITIES FOR FURNITURE	0.00	
2.0	BILL OF QUANTITIES FOR ELECTRICAL WORKS	0.00	
	GRAND TOTAL AMOUNT - (Exclusive of GST)	0.00	

The New India Insurance Co. Ltd



Tender No : - NERO/ESTB/CONTRACTOR/2024/003

Name of the work : INTERIOR WORK OF DIBRUGARH BRANCH OFFICE AT DIBRUGARH, ASSAM

Name Of The Bidder										
SL. NO.	PARTICULARS	DETAILS	AREA	LENGTH		HEIGHT		RATE	AMOUNT	AMOUNT
			SQFT	FEET	INCH	FEET	INCH			
	BILL OF QUANTITIES FOR FURNITURE									
1	Aluminium Partition – Ground Floor	Chamber- FIXED		19	6	10	7		0.00	
		Chamber Door- Above Fixed part		3	0	3	7		0.00	
		Chamber Door- SLIDING		3	0	7	0		0.00	
		Between Hall-2 Sections- FIXED		24	1	7	0		0.00	
		Between Hall- Door- SLIDING		4	8	7	0		0.00	
		Total							0.00	
2	Aluminium Partition for racks- Ground floor	Left- 3 palla		6	0	9	6		0.00	
		Left- 6 palla		17	7	9	6		0.00	
		Left- 4 palla		11	2	9	6		0.00	
		Right side- 4 palla		12	2	9	6		0.00	
		Right side- 3 palla		12	0	9	6		0.00	
		Right side- 5 palla		16	1	9	6		0.00	
		Total							0.00	
3	Mezzanine Floor									
	Aluminium Partition- Mezzanine Floor	Partition 1-FIXED		5	0	5	0		0.00	
		Partition 2 between storage -SLIDING		15	8	9	6		0.00	
		Total							0.00	
4	Wooden Flooring	25mm wooden planking, tongued and grooved in flooring, including fixing with iron screws complete with								
		Second class Deodar wood	200						0.00	
	TOTAL								0.00	

The New India Insurance Co. Ltd



Tender No : - NERO/ESTB/CONTRACTOR/2024/003

Name of the work : INTERIOR WORK OF DIBRUGARH BRANCH OFFICE AT DIBRUGARH, ASSAM

Name Of The Bidder

SL.No.	DESCRIPTION OF ITEM	UNIT	QUAN TTY	RATE	AMOUNT In Rs. (Exclusive of GST)	AMOUNT In Rs. (Exclusive of GST) in words
BILL OF QUANTITIES FOR ELECTRICAL WORKS						
1	Wiring for light point/ fan point/exhaust fan point/ call bell point with 1.5 sq.mm FRLS PVC insulated copper conductor single core cable in surface/ recessed medium class PVC conduit, with piano type switch, phenolic laminated sheet, suitable size M.S> box and earthing the point with 1.5 sq.mm FRLS PVC insulated copper conductor single core cable etc. As required					
1.1	Group C	Point	41		0.00	
2	Wiring for circuit/submain wiring alongwith earth wire with the following sizes of FRLS PVC insulated copper conductor, single core cable in surface/ recessed medium class PVC conduit as required					
2.1	2*2.5 sq.mm + 1*2.5 sq.mm earth wire	meter	80		0.00	
2.2	2*4 sq.mm + 1*4 sq.mm earth wire	meter	120		0.00	
3	Supplying and fixing all following sizes of medium class PVC conduit along with accessories in surface/recess including cutting the wall and making good the same in case of recessed conduit as required					
3.1	25mm	meter	200		0.00	
4	Supplying and fixing following piano type switch/socket on the existing switch box/ cover including connections etc. As required					
4.1	5/6 A Switch	Each	75		0.00	
4.2	15/16 A Switch	Each	19		0.00	
4.3	3 Pin 5/6 A Socket outlet	Each	120		0.00	
4.4	6 Pin 15/16 A Socket outlet	Each	19		0.00	
5	Supplying and fixing two module stepped type electronic fan regulator on the existing modular plate switch box including connections but excluding modular plate etc as required.	Each	4		0.00	
6	Supplying and fixing metal box of following sizes (nominal size) on surface or in recess with suitable size of phenolic laminated sheet cover in front including painting etc as required.					
6.1	75 mm x 75 mm x 60 mm deep	Each	5		0.00	
6.2	150 mm x 150 mm x 60 mm deep	Each	13		0.00	
6.3	200 mm x 125 mm x 60 mm deep	Each	9		0.00	
6.4	200 mm x 140 mm x 75 mm deep	Each	28		0.00	
8	Supplying and fixing 3 pin, 5 A ceiling rose on the existing junction box/ wooden block including connections etc as required	Each	33		0.00	

9	Supply, Installation, Testing and Commissioning of 1200 mm sweep, BEE 5 star rated, ceiling fan with Brush Less Direct Current (BLDC) Motor, class of insulation: B, 3 nos. Blades, 30 cm long down rod, 2 nos. Canopies, shackle kit, safety rope, copper winding, Power Factor not less than 0.9, Service Value (CMM/W) minimum 6.85, Air delivery minimum 215 CMM, 350 RPM (tolerance as per IS:374-2019), THD less than 10%, remote or electronic regulator unit for speed control and all remaining accessories including safety pin, nut bolts, washers, temperature rise= 75 degree C (max.), insulation resistance more than 2 mega ohm, suitable for 230 V, 50 Hz, single phase AC supply, earthing etc complete as required.	Each	4		0.00	
10	Supplying of TR Inverter type split Air conditioners suitable for operation on A/C supply single phase 50Hz230V with hermetically sealed inverter compressor with air cooled condenser, latest R410A/R-32 refrigerant fanmotor, start & run capacitors, relay & overload protector internal unit, with one indoor & one outdoor unit, The condenser unit will be placed outside the room a void noise including standard length of suitable size copper tubing covered with nitrile rubber insulation tube. suitable capacity 3 core sheathed/ PVC copper cable and a battery operated wireless remote unit					
	3 Star					
	1.5 Ton Capacity	Each	2		0.00	
11	Supplying, installation, testing and commission of superior finish extruded LED Batten white powder coated pressure die cast aluminium body with high transmissivity, non yellowing PMMA diffuser with driver and accessories pre-wired upto terminal block assembly. LED luminaires of make PHILIPS Cat no. BN021C LED20S PSU CDL G LED 18W or equivalent including lamps, etc complete [TL].	Each	25		0.00	
12	Supplying, installation, testing and commission of 9 W LED Bulb non dimmable in the existing batten/angle holder as required and as directed by the department (Jaquar or equivalent make).	Each	4		0.00	
13	Supplying, Installation, testing and commission of Wall mounted Fan Fixed onto Wall/Column - (Havells Make- Airboil High Speed Wall Fan_Product Id- FHWABHSWHT18)	Each	8		0.00	
14	Supplying, installation, testing and Commissioning of MICROTEK JUMBO HOME UPS Model - JM SW 5500+/48V (Working Power 5.2KVA/4160W)- 24 months Warranty	Each	1		0.00	
15	Supplying, installation, testing and Commissioning of Exide Battery 12V 250 AH- 60 month warranty.	Each	4		0.00	
	TOTAL				0.00	